

IN WEBER COUNTY

SCALE 1" = 200'

TAXING UNIT: 318

SEE PAGE 26-2

ESPL INVESTMENTS
LIMITED PARTNERSHIP
210260046
21.16 AC±
EXCL ROAD

210260041
SEE P. 26-2

WAITE PROPERTIES LLC = 2/3
ETAL
210260047
10.16 AC±

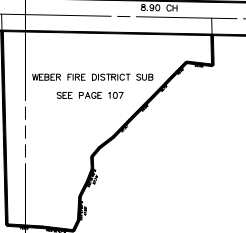
RONALD J PARRY & WF LOIS
210260049
18.92 AC±

210260050
SEE P. 26

Laurie Porter & husband
Sanford W McCS
210260072
1.00 AC±

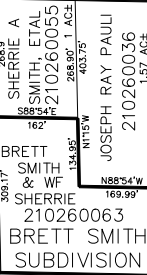
SEE BOOK 24, P. 19

SEE BOOK 24, P. 18



J & G INVESTMENT
PARTNERSHIP LLC
210260039
19.37 AC±

PATRICIA K CAMPBELL
210260057
7.53 AC±



REX MUMFORD
SUBDIVISION
SEE PAGE 86

STEVEN F MCFARLAND
210260030 2.05 AC±
STEVEN F MCFARLAND
210260029
SEE P. 26

LYNNDA WANGSGARD
BRETT WANGSGARD
KELLY WANGSGARD
CURTIS WANGSGARD
210260031
13.68 AC±

PATRICIA K CAMPBELL
210260064
7.46 AC±

PAMELA ENNIS
CROCKETT
210260065
7.17 AC±

ABE WANGSGARD=1/6 ETAL
210260035
25.17 AC±

MARY KIMBALL
210260071
6.15 AC±

210260027
SEE P. 26

SEE PAGE 34